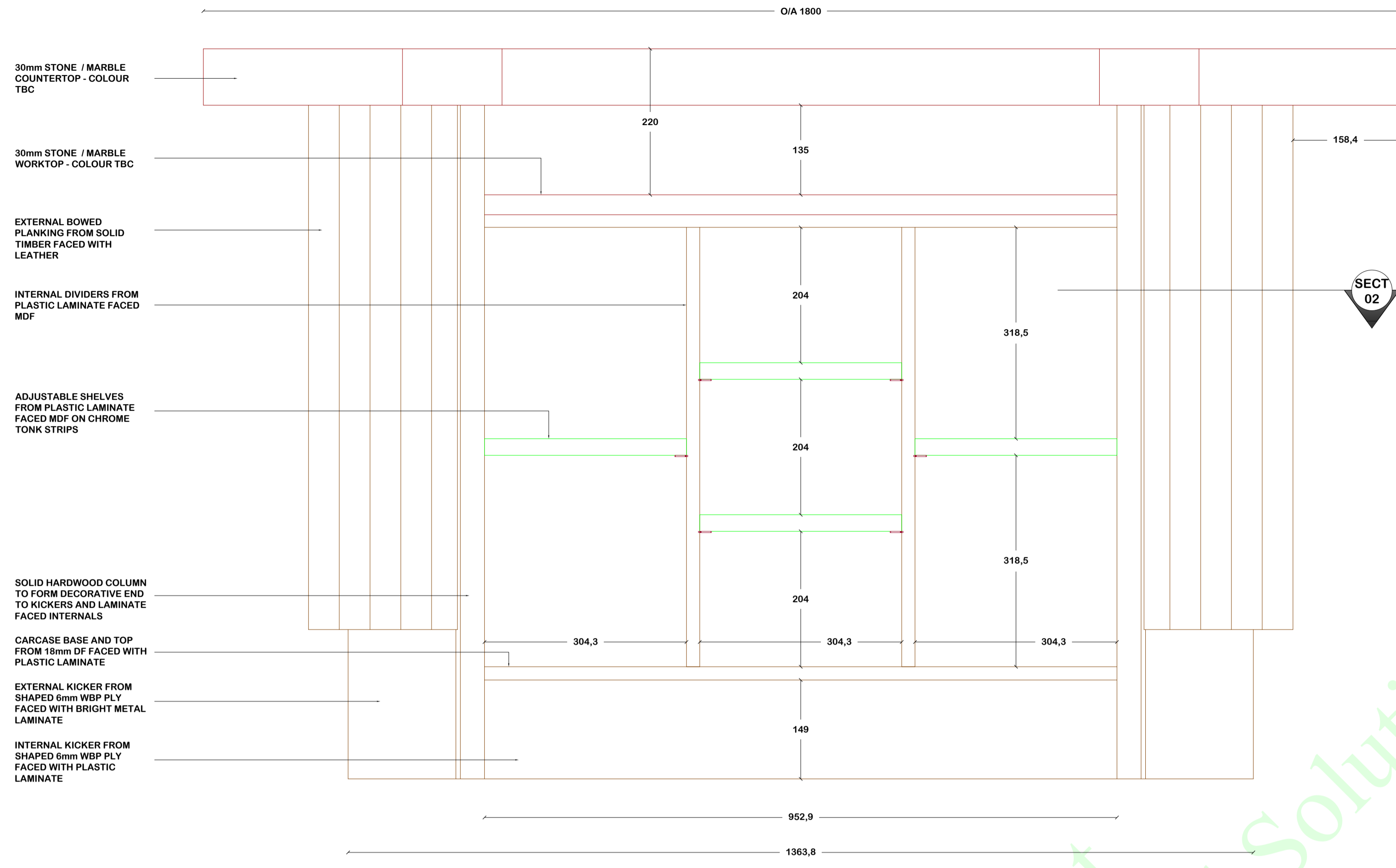
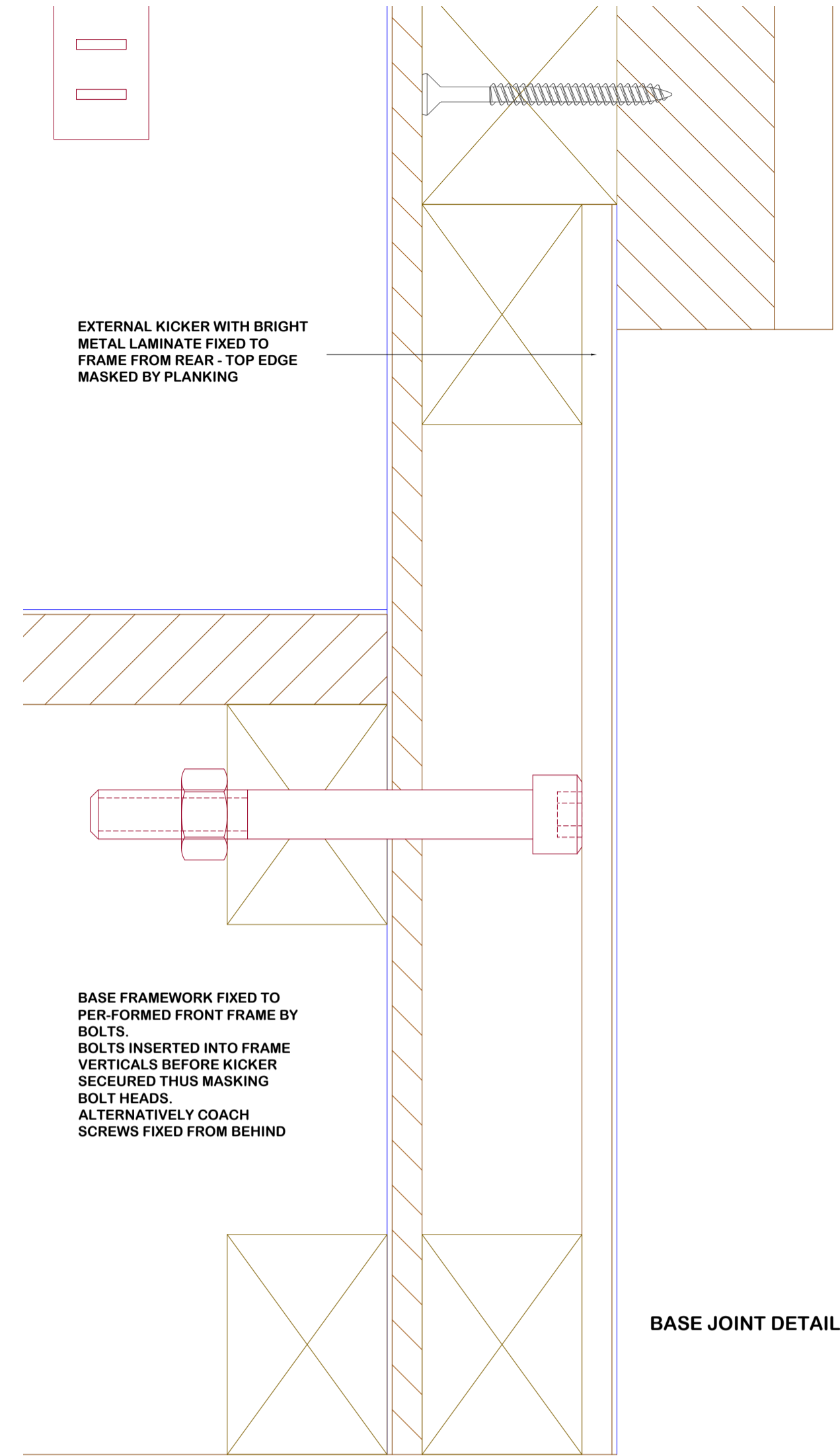


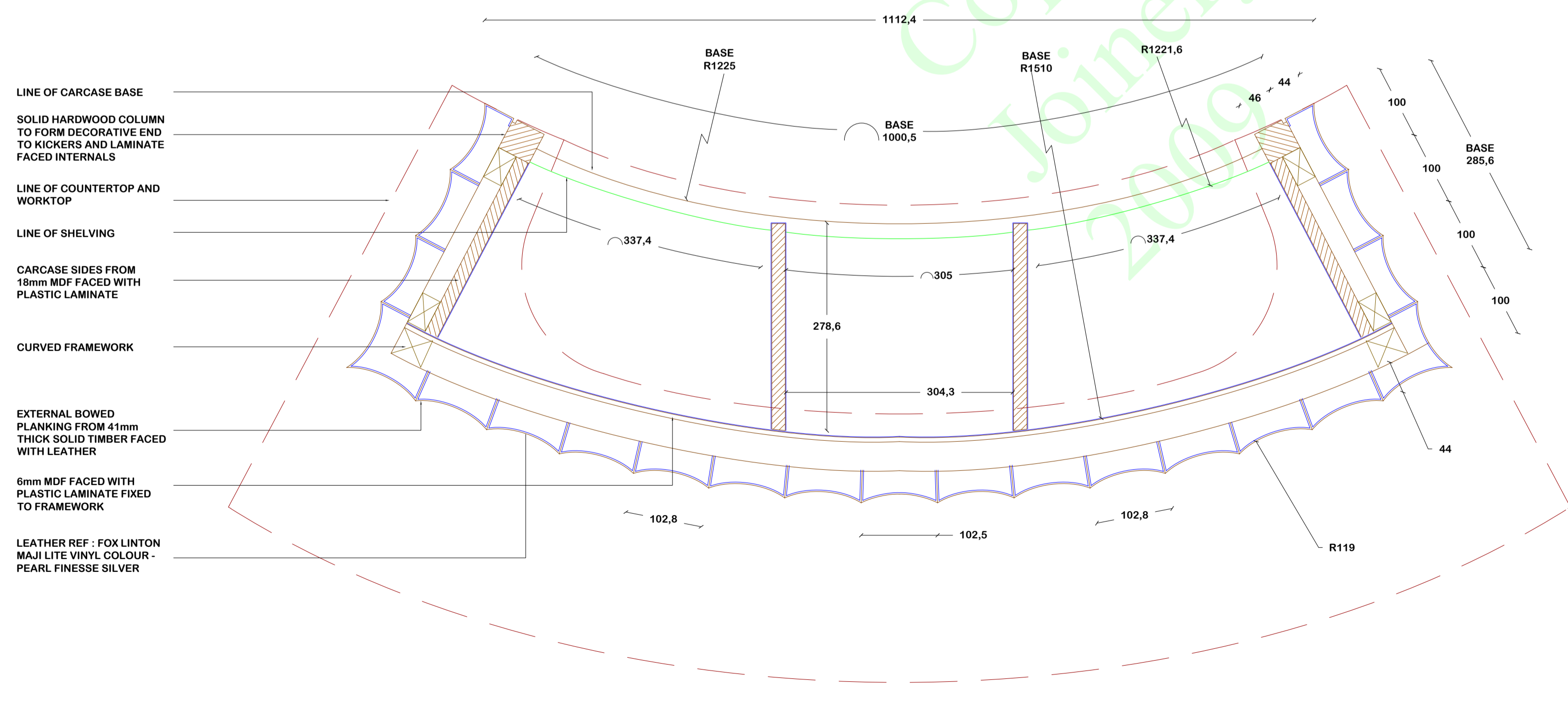
PLAN
01



ELEVATION 02 DETAIL 1:5



ELEV
02



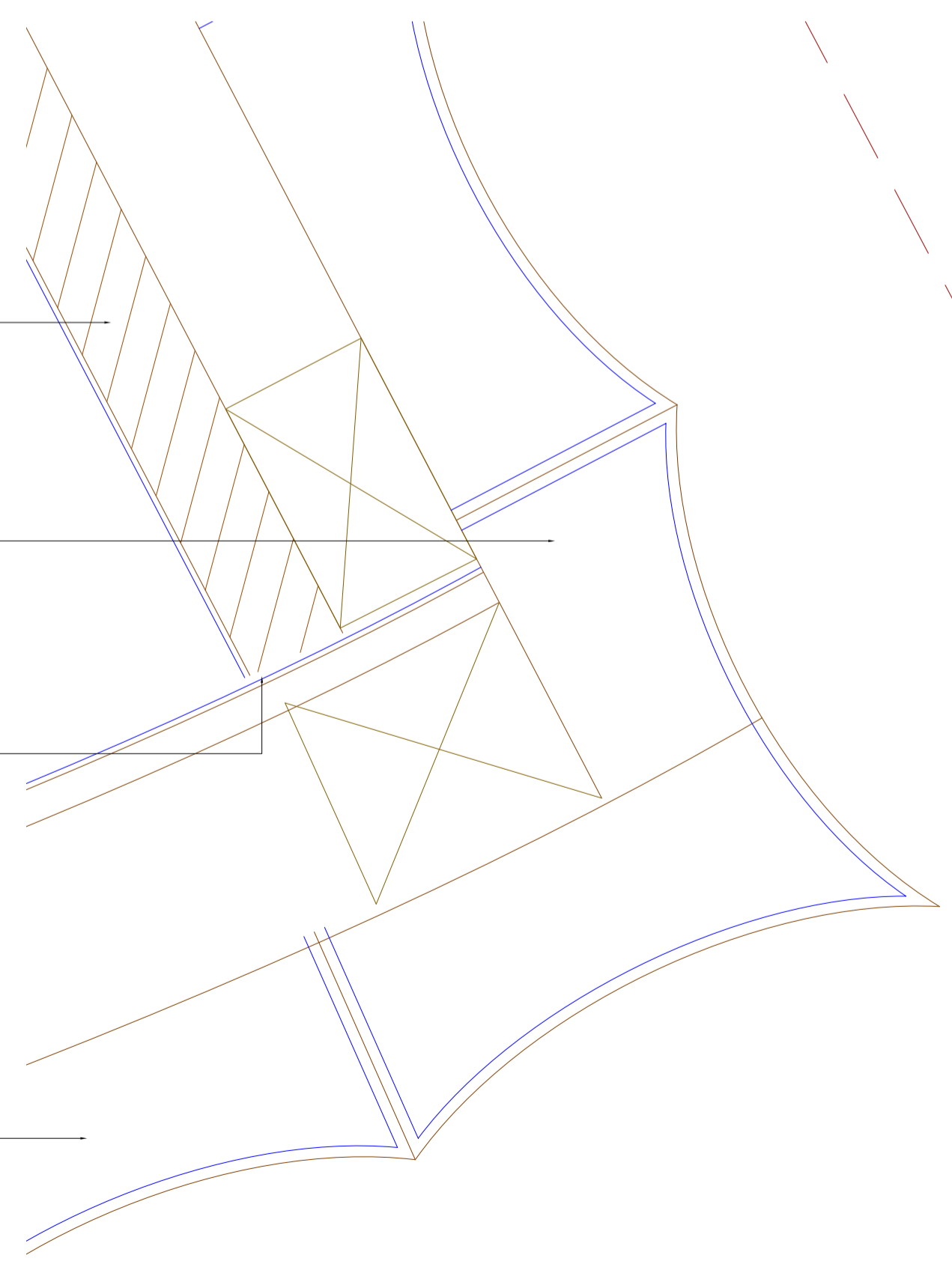
SECTION 02 DETAIL 1:5

CARCASE SIDE FROM THICKER 18mm MDF FACED WITH PLASTIC LAMINATE IN ORDER TO TAKE CHROME TONK STRIPS

CORNER PLANKING FORMED BY USING PART WIDTH PLANK ON SIDE

SIDE FRAMEWORK WITH PLANKS FITTED OFFERED UP TO FRONT FRAMEWORK AFTER INTERNAL PLASTIC LAMINATE FACED MDF HAS BEEN FIXED

BOWED PLANKS SECURED TO FRONT AND SIDE FRAMEWORK FROM REAR PRIOR TO INTERNAL MDF FITTED



CORNER PLANKING DETAIL 1:1

NOTES

- This drawing has been prepared to cover matters which are the requirements of the Company listed below and do not constitute a full specification of the work.
- All dimensions, details, components, and assemblies are to be verified by the Contractor PRIOR to construction, manufacture or supply.
- Any conflicting information, errors or omissions shown or implied on this drawing shall be referred to the Contractor PRIOR to construction or ordering of materials.
- Do not scale this drawing.
- This drawing is the Copyright of Joinery Cad Solutions Ltd and may not be copied in part or whole without written permission.

REVISIONS :

A. 16.12.08 FOR APPROVAL

B. 19.03.09 BOWED PLANKING FACED WITH LEATHER

SPECIFICATIONS :

MATERIAL :

- CARCASE BASE, TOP, AND SIDES FROM 18mm MDF FACED INTERNALLY WITH PLASTIC LAMINATE
- CARCASE INTERNAL BACK FROM 6mm MDF FACED WITH PLASTIC LAMINATE
- BOWED PLANKING FROM SOLID TIMBER
- EXTERNAL KICKER FROM 6mm WBP PLY FACED WITH BRIGHT METAL LAMINATE
- INTERNAL KICKER FROM 6mm MDF FACED WITH PLASTIC LAMINATE
- DIVIDERS FROM 18mm MDF FACED WITH PLASTIC LAMINATE
- SHELVES FROM 25mm MDF FACED WITH PLASTIC LAMINATE
- END COLUMNS FROM SOLID HARDWOOD
- FRAMEWORK FROM SOFTWOOD
- COUNTERTOP AND WORKTOP FROM STONE / MARBLE
- UNDERSIDE OF COUNTERTOP FROM 18mm MDF FACED WITH HW VENEER MATCHING PLANKS

HARDWARE :

- CHROME TONK STRIPS
- LED DOWNLIGHTERS

FINISHING :

- CLEAR LACQUERED FINISH TO ALL EXPOSED HARDWOOD
- BOWED PLANKING FACED WITH LEATHER

NOTES :

- PLASTIC LAMINATE COLOUR TBC
- HARDWOOD SPECIES TBC
- WORKTOP / COUNTERTOP MATERIAL TBC
- LEATHER COLOUR TBC

WWW.JOINERYCADSOLUTIONS.COM
Tel/Fax : 01603 613693 Mob : 0794 2146564
CAD drawings for your timber projects
We draw it, you make it
Doors - Windows - Stairs - Rafts - Furniture
Barns - Kitchens - Decking - Tannery - Architectural

CLIENT	
PROJECT	
TITLE ENTERTAINMENTS ROOM BAR Pt 2	
ISSUE CLIENT APPROVAL	
JOB No	
DRAWING No	JCS1435L2
CUT LIST No	
SCALE	1:1, 1:5 @ A1
DRAWN BY	JCS
REV	B
CHECKED BY	