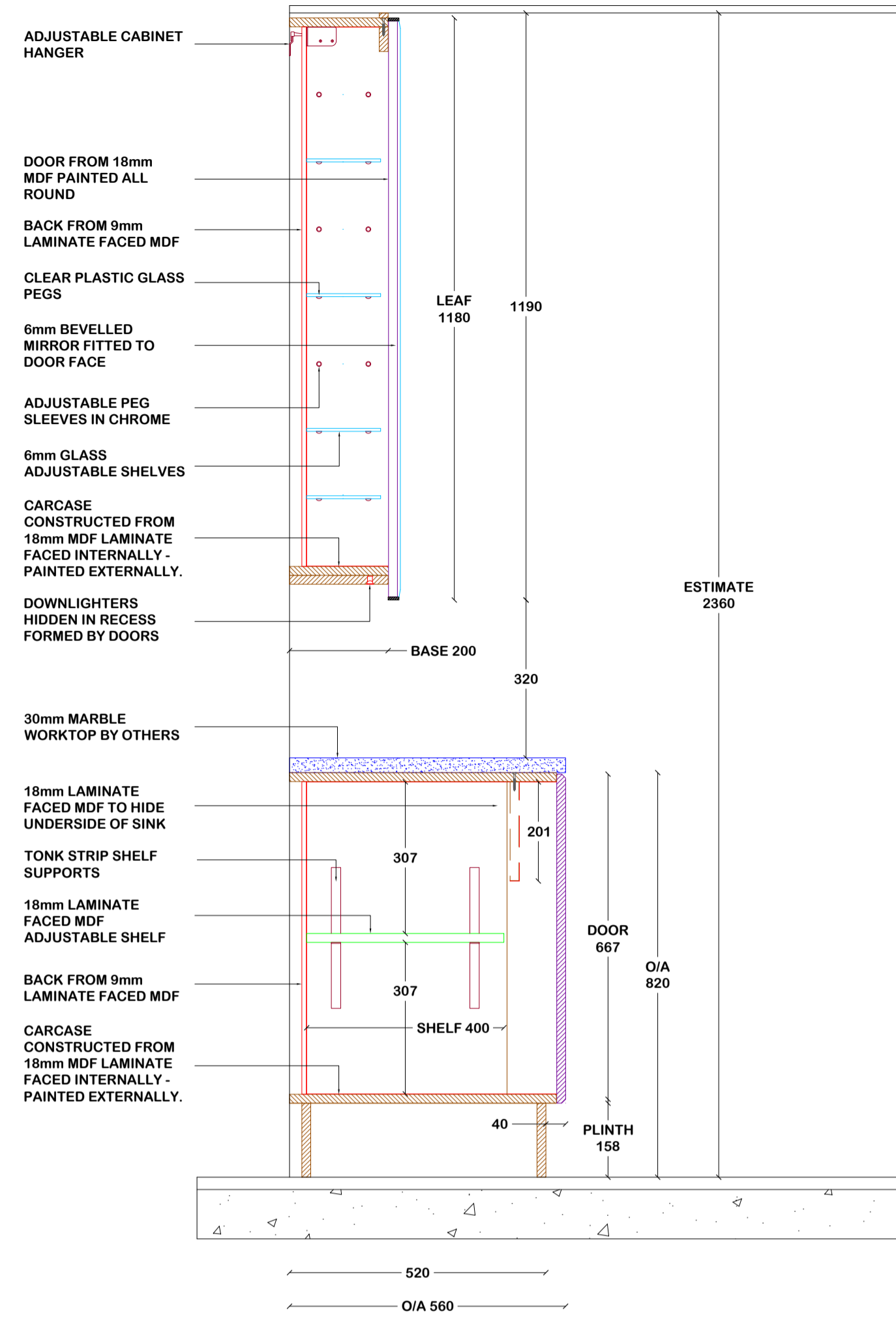
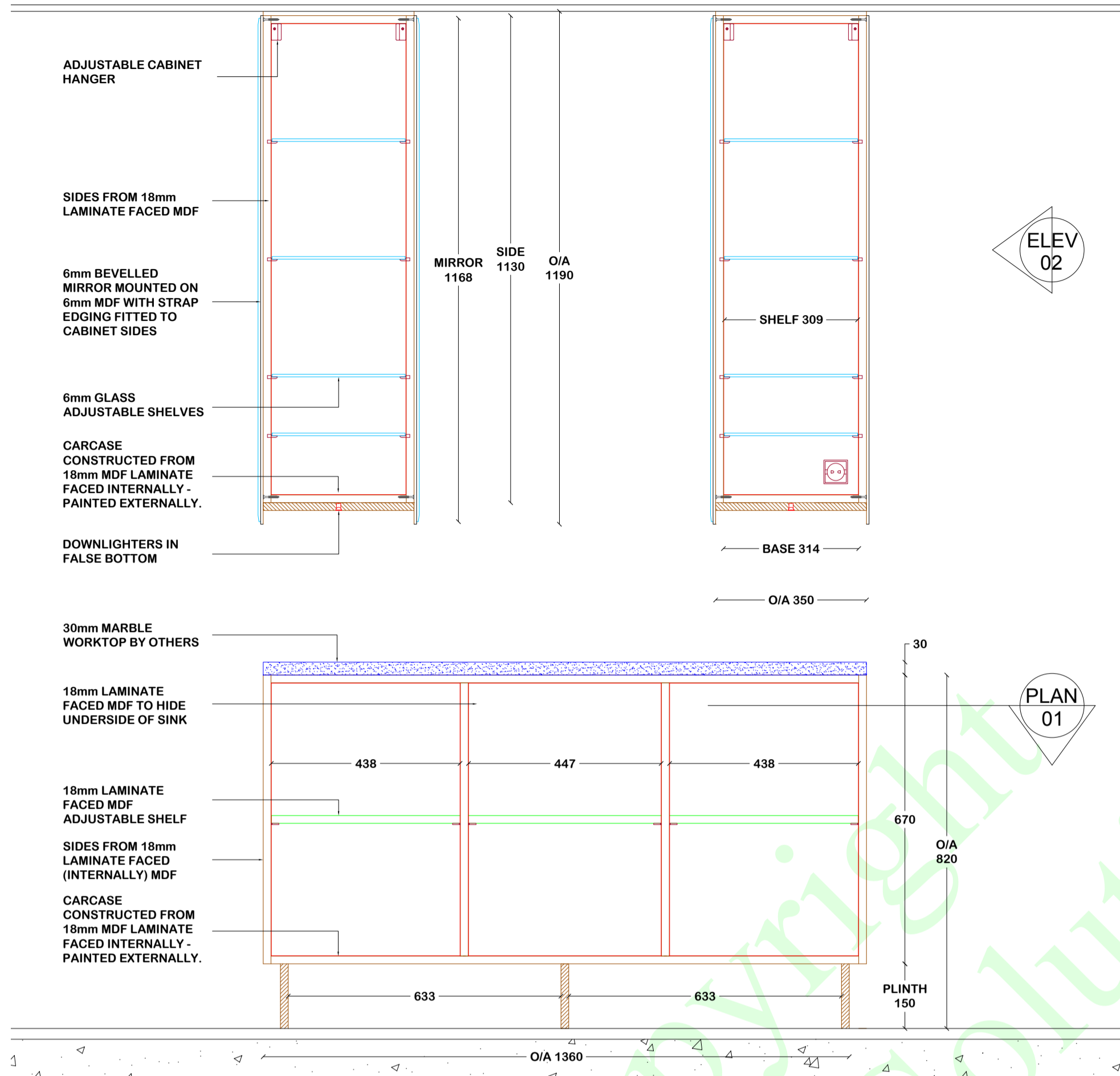


SECTION 01 DETAIL 1:10



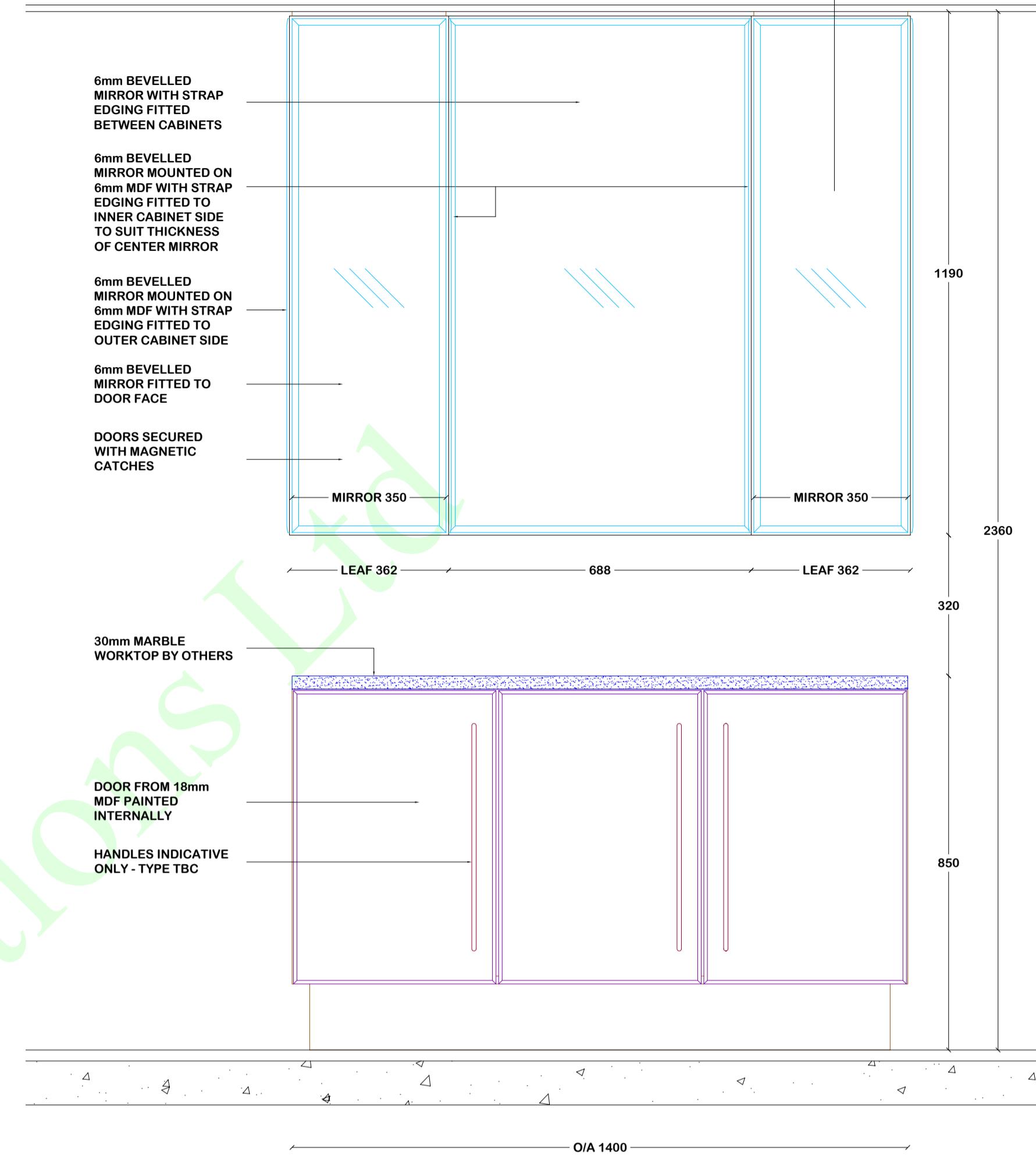
SECTION 02 DETAIL 1:10



ELEV 02

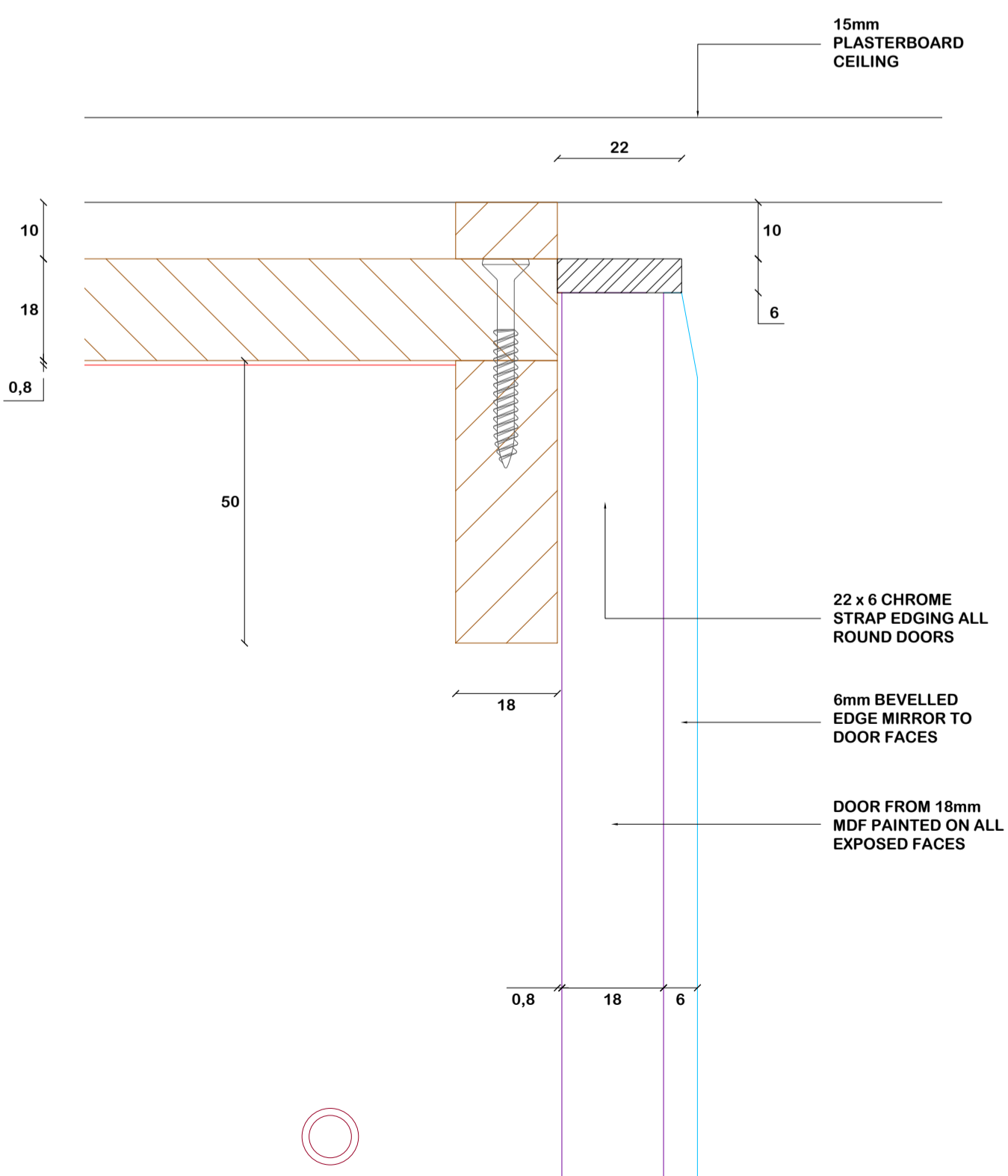
PLAN 01

ELEVATION 01 DETAIL 1:10

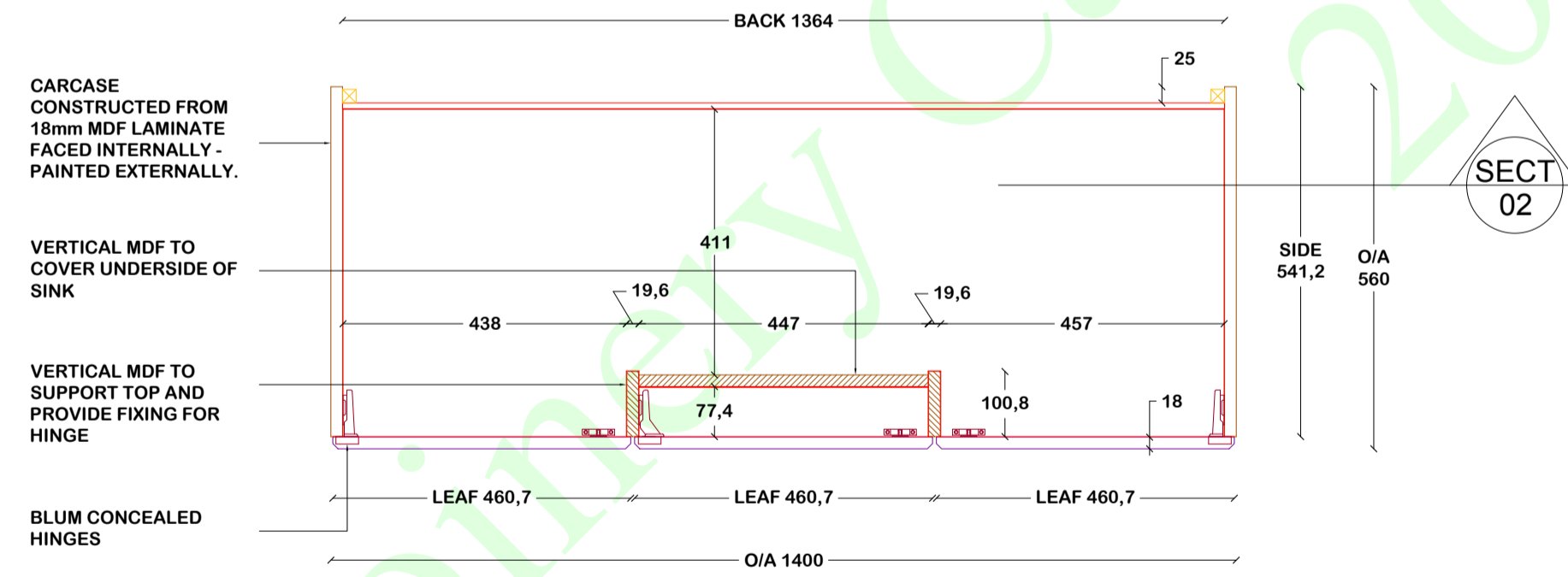


SECT 01

DOOR EDGING DETAIL 1:1



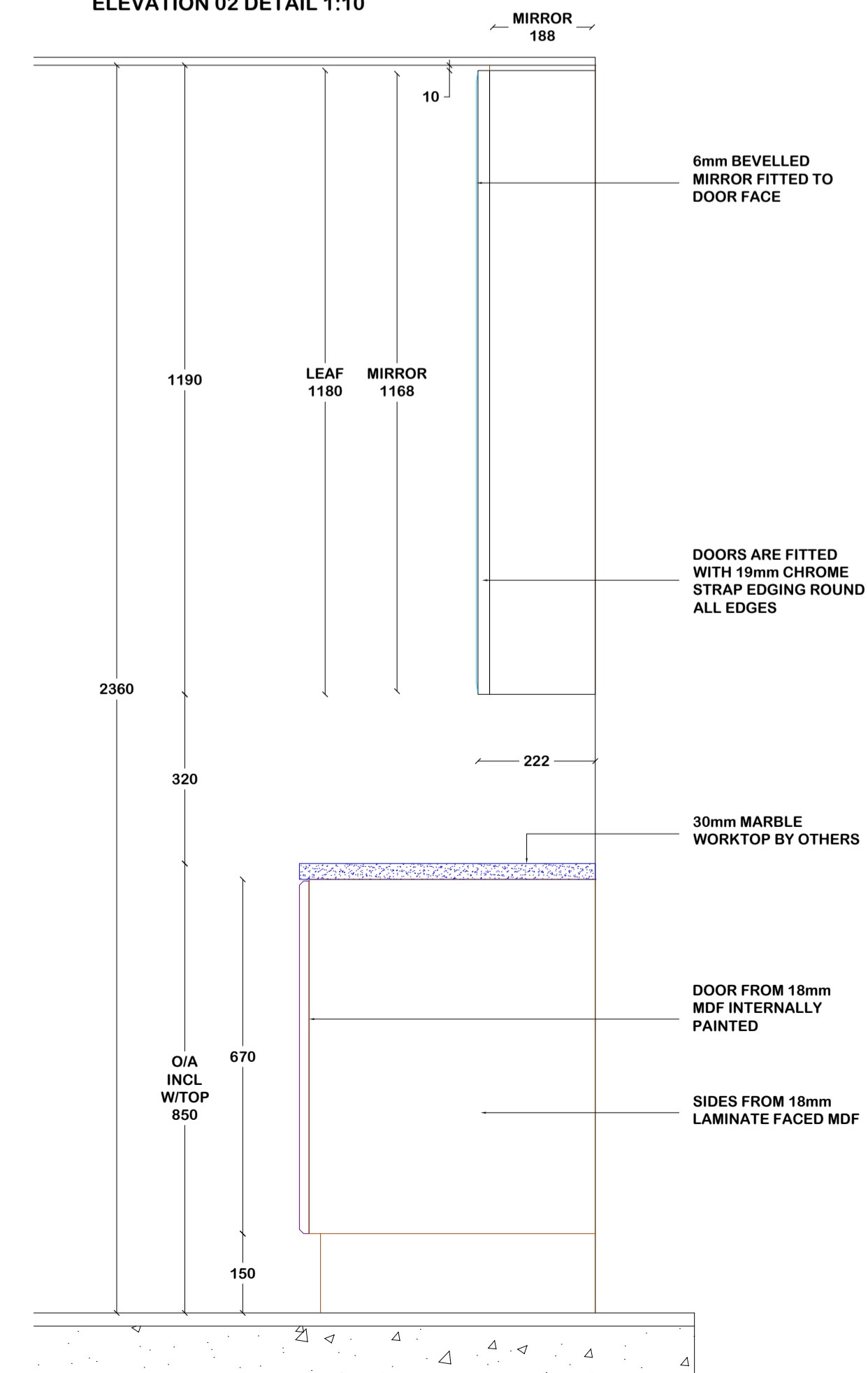
PLAN 01 DETAIL 1:10



SECT 02

ELEV 01

ELEVATION 02 DETAIL 1:10



- NOTES :**
- This drawing has been prepared to cover matters which are the requirements of the Company listed below and do not constitute a full specification of the work.
 - All dimensions, details, components, and assemblies are to be verified by the Contractor PRIOR to construction, manufacture or supply.
 - Any conflicting information, errors or omissions shown or implied on this drawing shall be referred to the Contractor PRIOR to construction or ordering of materials.
 - Do not scale this drawing.
 - This drawing is the Copyright of Joinery Cad Solutions Ltd and may not be copied in part or whole without written permission.

- REVISIONS :**
- 16.10.08 FOR APPROVAL
 - 13.11.08
 - CEILING SCRIBE AMENDED
 - DOORS AMENDED
 - STRAPPING AMENDED
 - SHELVES AMENDED
 - STRIP LIGHT OMITTED
 - RECESS ADDED
 - DOWNLIGHTERS ADDED
 - BASEIN BAFFLE AMENDED
 - SHAVER SOCKET ADDED
 - KICKER AMENDED
 - MEDICINE CABINET HEIGHTS AMENDED
 - CENTRAL MIRROR SHOWN
 - 6mm TOP SCRIBES OMITTED
 - 20.11.08
 - RIGHT HAND MIRROR TO RIGHT HAND UPPER CABINET OMITTED
 - DOWNLIGHTERS AMENDED
 - WORDING AMENDED
 - LOWER CABINET DOORS PAINTED INTERNALLY
 - TOUCH CATCHES REPLACED BY MAGNETIC CATCHES
 - 27.11.08
 - SITE DIMS AMENDED

- SPECIFICATIONS :**
- MATERIAL :**
- CARCASS TOP - 18mm MDF
 - CARCASS STM - 18mm MDF
 - CARCASS SIDES - 18mm MDF
 - CARCASS BACK - 9mm MDF
 - FASCIA - 18mm PAINTED MDF
 - PLINTH - 18mm PAINTED MDF
 - DOORS - 18mm MDF
 - SHELVES - 18mm LAMINATED MDF
- GLAZING :**
- 6mm FULL HEIGHT MIRRORS WITH CHAMFERED EDGING
- HARDWARE :**
- BLUM CONCEALED HINGES
 - PLASTIC GLASS SHELF PEGS
 - CHROME PEG SLEEVES
 - ROLLER CATCHES
 - HANDLES TBC
 - STRIP LIGHTING (BY OTHERS)
 - TOUCH CATCHES TO MEDICINE CABINET DOORS
 - TONK STRIPS IN CHROME
 - SHAVER SOCKET
- FINISH :**
- DOORS PAINTED ALL FACES - COLOUR TBC
 - PLINTHS & FASCIAS PAINTED - COLOUR TBC
 - INTERNAL FACES OF VANITY UNIT AND BOTH MEDICINE CABINETS TO BE FACED WITH PLASTIC LAMINATE

- NOTES :**
- LAMINATE COLOUR TBC
 - PAINT COLOUR TBC

CLIENT	
PROJECT	
TITLE	
SECOND FL VANITY DETAILS	
ISSUE	
CLIENT APPROVAL	
JOB No	
DRAWING No	JCS1430L9
CUT LIST No	
SCALE	1:1, 1:10 @ A1
DRAWN BY	JCS
REV	E
CHECKED BY	