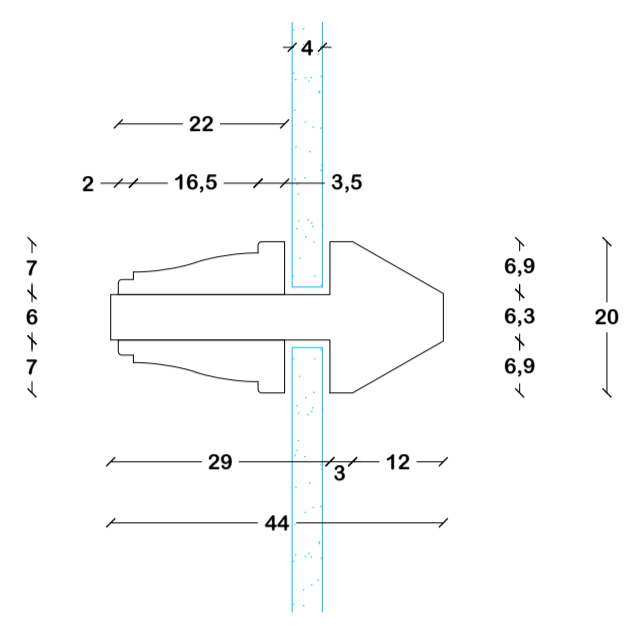


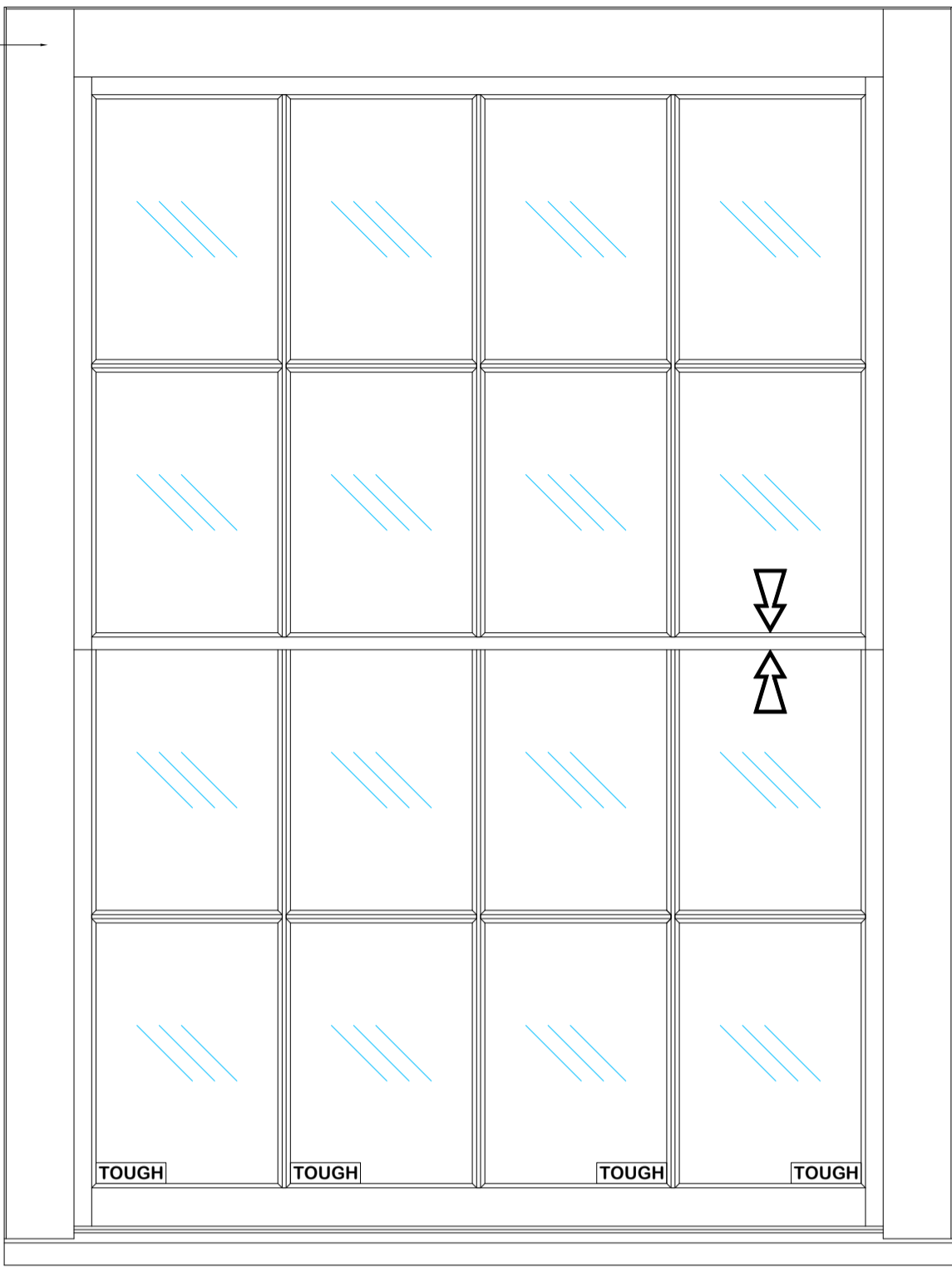
VSS HEAD DETAIL 1:1

HEAD LINING AND EXTERNAL JAMB MAY BE INCREASED TO ALLOW FOR BRICK VOUSOIR

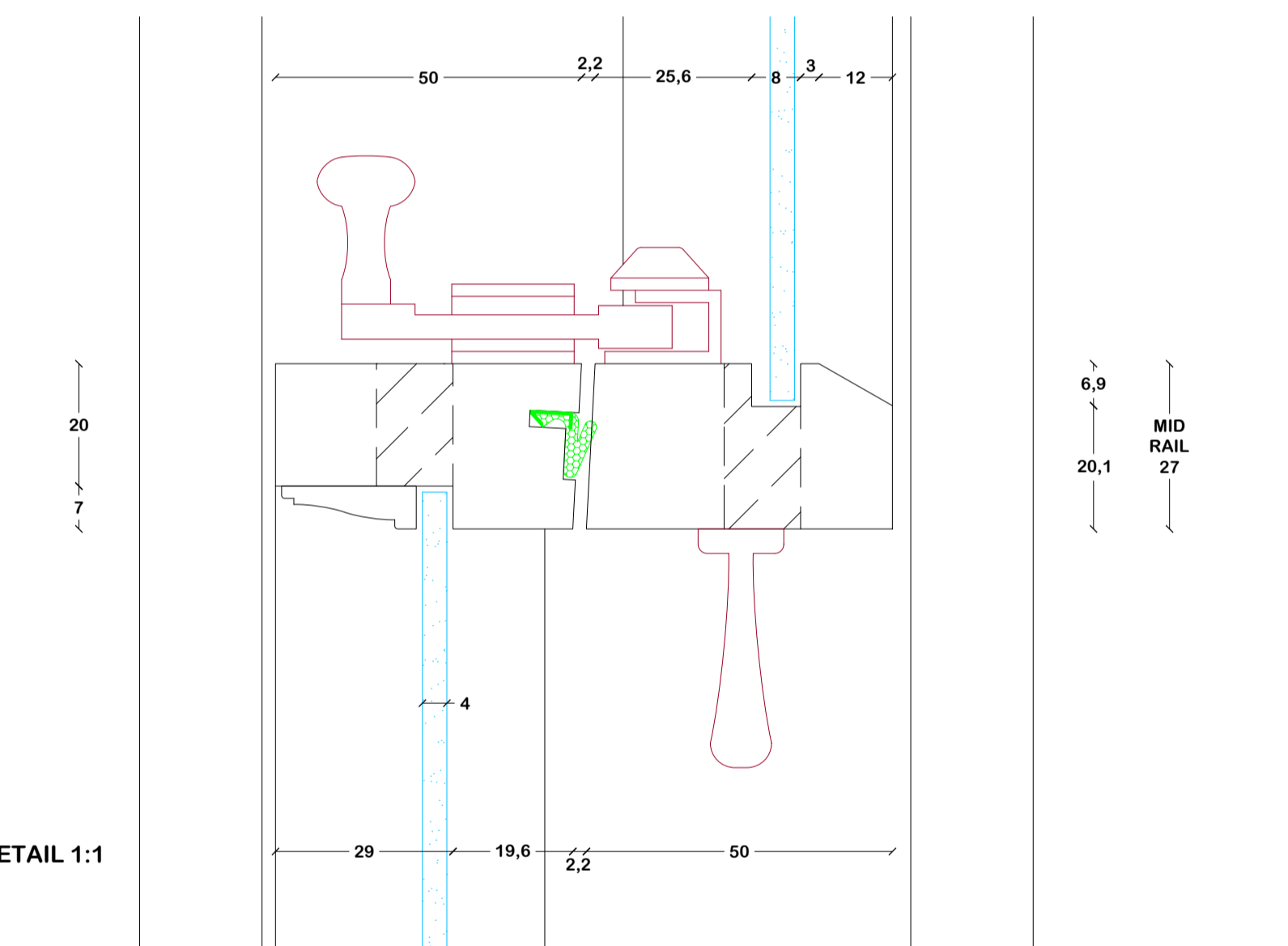
HEAD LINING AND EXTERNAL JAMB MAY BE INCREASED TO ALLOW FOR BRICK VOUSOIR



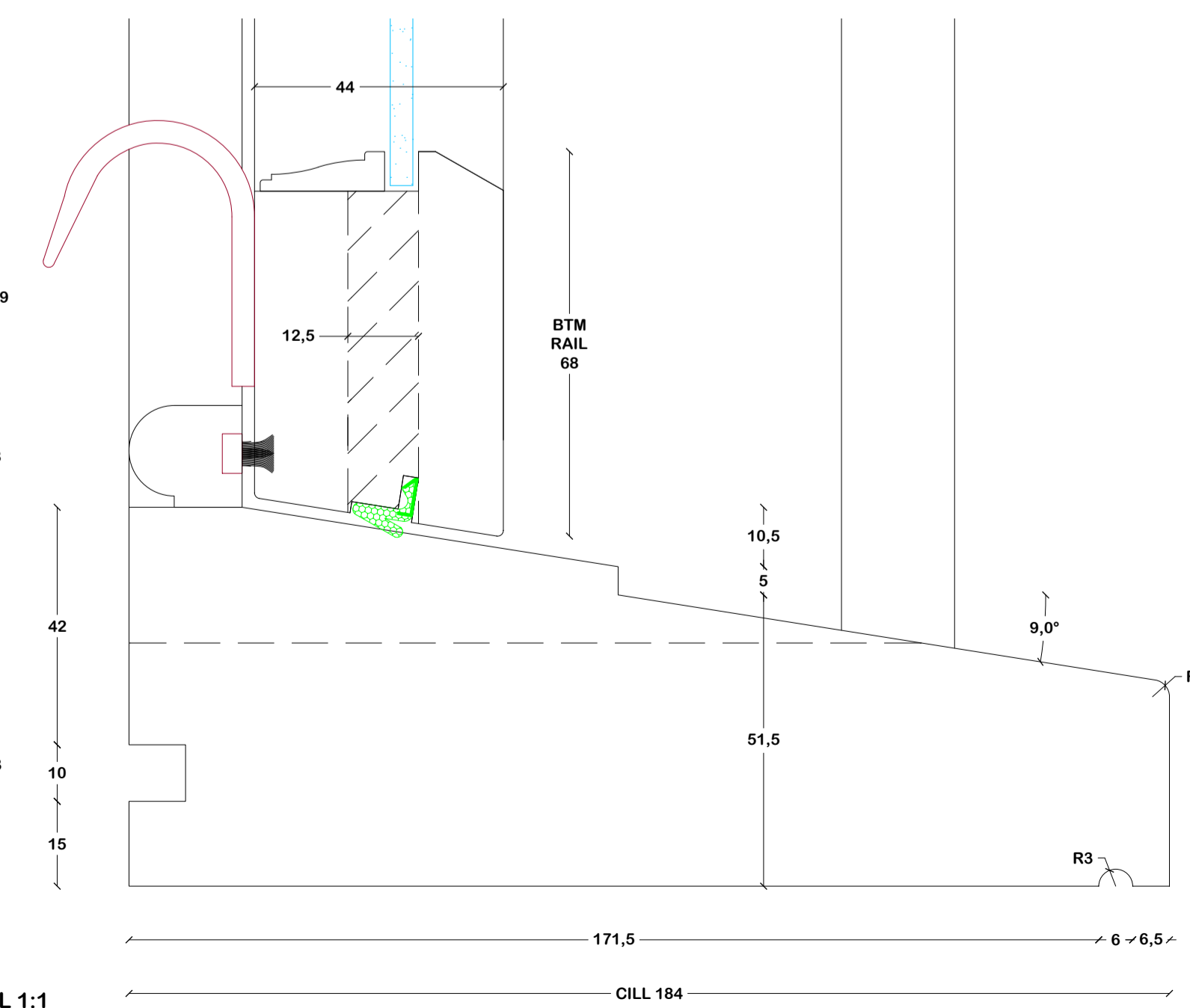
GLAZING BAR DETAIL 1:1



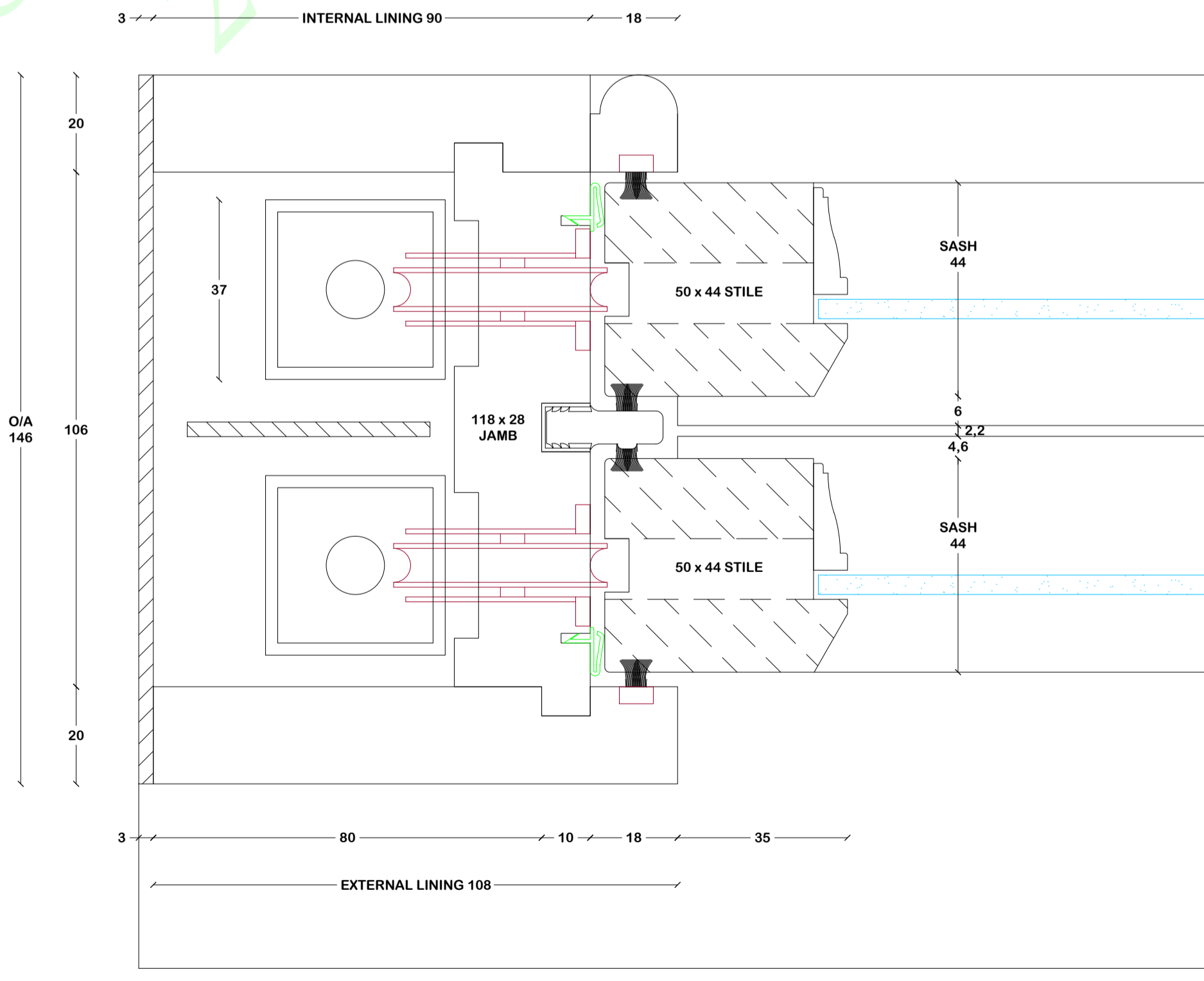
TYPICAL ELEVATION 1:10



VSS MID RAIL DETAIL 1:1



VSS CILL DETAIL 1:1



VSS JAMB DETAIL 1:1

- NOTES :**
- This drawing has been prepared to cover matters which are the requirements of the Company listed below and do not constitute a full specification of the work.
  - All dimensions, details, components, and assemblies are to be verified by the Contractor PRIOR to construction, manufacture or supply.
  - Any conflicting information, errors or omissions shown or implied on this drawing shall be referred to the Contractor PRIOR to construction or ordering of materials.
  - Do not scale this drawing.
  - This drawing is the Copyright of Joinery Cad Solutions Ltd and may not be copied in part or whole without written permission.

- REVISIONS :**
- A. 27.03.09 FOR APPROVAL

- SPECIFICATIONS :**
- CASEMENTS & DOORS**
- MATERIAL :**
- FRAME JAMBS & HEAD FROM SOFTWOOD
  - FRAME CILL FROM HARDWOOD
  - SASHES / LEAVES FROM SOFTWOOD
  - GLAZING BARS & BEADS FROM SOFTWOOD
- HARDWARE :**
- LOCKS TBC
  - HANDLES TBC
  - HINGES TBC
  - AQUAMAC 21 WEATHERSEAL IN BLACK
- GLAZING :**
- 4, 12, 4K GAS FILLED CLEAR DOUBLE GLAZING UNITS
  - BLACK SPACER
  - BLACK DUMMY BARS BETWEEN PANES
  - STICK ON GLAZING BARS
  - TOUGHENED WHERE APPLICABLE
- FINISH :**
- PAINTED BLACK THROUGHOUT
  - HARDWARE COLOUR TBC

- NOTES :**
- SLIDING SASH WINDOW
- MATERIAL :**
- FRAME JAMBS & HEAD FROM SOFTWOOD
  - ALL LINGINGS FROM SOFTWOOD
  - FRAME CILL FROM HARDWOOD
  - SASHES FROM SOFTWOOD
  - GLAZING BARS & BEADS FROM SOFTWOOD
- HARDWARE :**
- LOCK TBC
  - SASH LIFTS - COLOUR TBC
  - PULLEYS - COLOUR TBC
  - AQUAMAC 21 IN WHITE
  - SLIDER IN WHITE
  - EXTREX PARTING BEAD IN WHITE
  - EXTREX BRUSH SEALS IN WHITE
- GLAZING :**
- 4 mm CLEAR GLAZING
  - TOUGHENED WHERE APPLICABLE
- FINISH :**
- WINDOW TO BE PAINTED WHITE

- NOTES :**
- EXTERNAL HEAD LINING AND EXTERNAL JAMB LININGS TO SUIT BRICK VOUSOIR

WWW.JOINERYCADSOLUTIONS.COM  
Tel/Fax : 01603 613693 Mob : 0794 2146564  
CAD drawings for your timber projects  
We draw it, you make it  
Doors Windows Stairs Balustrades  
Joinery Kitchens Decking Terraces Architectural

CLIENT	
PROJECT	
TITLE	SLIDING SASH WINDOW DETAIL
ISSUE	CLIENT APPROVAL
JOB No	
DRAWING No	JCS1450L3
CUT LIST No	
SCALE	1:1, 1:10 @ A1
DRAWN BY	JCS REV A
CHECKED BY	